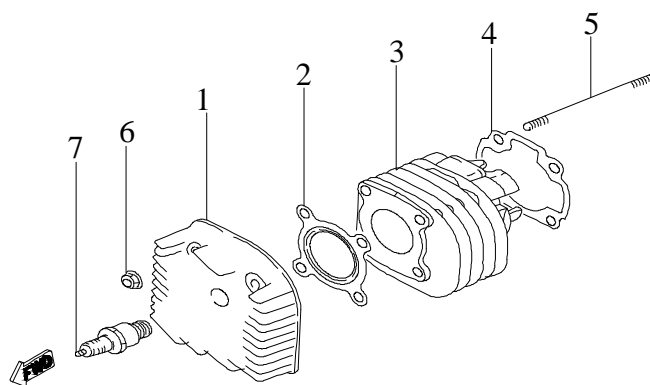
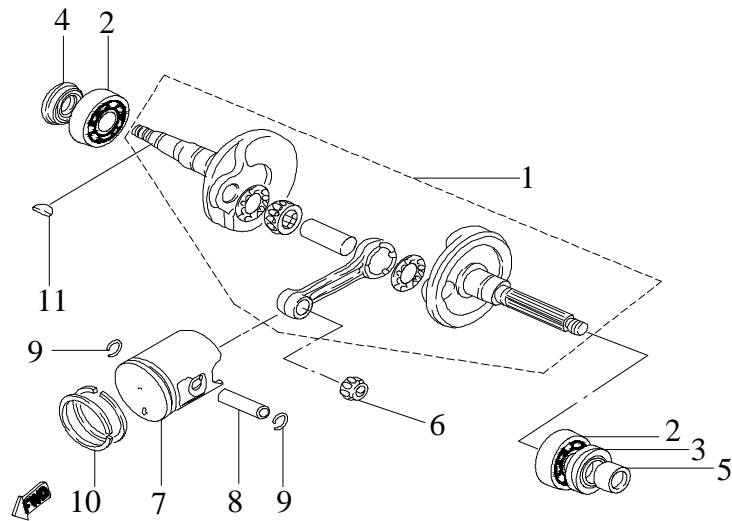


# E-1 Cylinder,Cylinder Head & Spark Plug



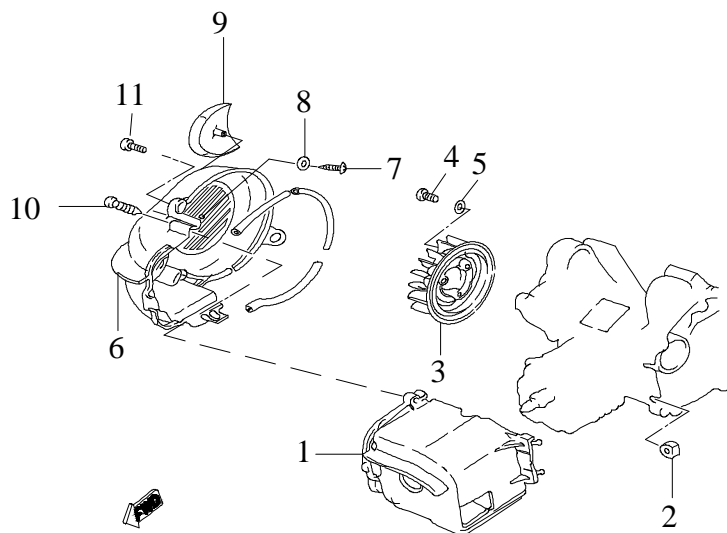
Item	Part No.	Part Name		Q'ty	Note
1	12210-E06-000	....	Head Cover, Cylinder	1	
2	12251-E06-000	.....	Gasket, Cylinder Head	1	
3	12100-E06-000	..	Cylinder	1	
4	12191-E03-002	....	Gasket, Cylinder	1	
5	P91000-07109	....	Bolt, Stud	4	
6	P92120-07-10C	.....	Nut	4	
7	98069-BR8HSA-R1	...	Plug, Spark	1	

## Piston, Crankshaft



Item	Part No.	Part Name	Q'ty	Note
1	13000-E03-000	....(39.5mm)	1	Crankshaft Ass'y
2	95100-6204C3	....(6204C3)	2	Ball Bearing, Crankshaft
3	96100-204208	..	1	Seal,Oil
4	96100-203006	..	1	Seal,Oil
5	13200-E03-000	.....(#F1046-1)	1	Collar,L Crankcase
6	95200-KBK10	.....	1	Bearing, Needle
7	13300-E06-000	..	1	Piston(std.)
8	13400-E03-000	...(5x10x32)	1	Pin, Piston
9	13410-E03-000	.....	2	Clip, Piston Pin
10	13310-E06-000	....	1	Rings, Piston(std.)
11	13010-E01-000	...	1	Key, Woodruff

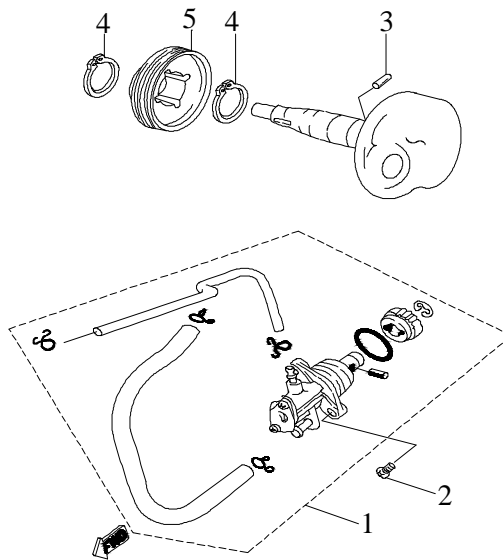
## E-3 Fan Shroud



Item	Part No.	Part Name		Q'ty	Note
1	17100-E06-000	....	Air Shroud, Cylinder	1	
2	17110-E01-000	..	Grommet	2	
3	18100-E04-000	..	Fan	1	
4	P91760-06016-05W	.....(M6x16)	Hex. Socket Bolt	3	
5	P93100-06013-01W	....	Washer, Plain	3	
6	18210-E04-000	...	Cover, Fan	1	
7	P91825-05016	.....	Screw, Tapping	1	
8	P93100-06013-01W	....	Washer, Plain	1	
9	18310-E04-000	...	Cover, Dust Protect	1	
10	P91825-06040	.....	Screw, Tapping	1	
11	P91760-06020-05W	.....(M6x20)	Hex. Socket Bolt	2	

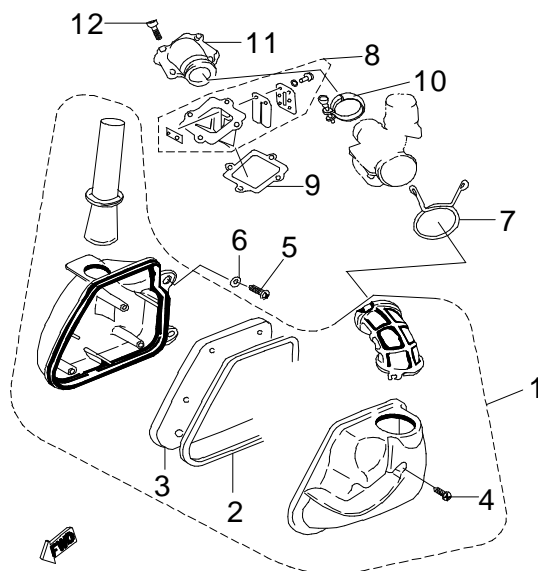
E-5

Oil Pump



Item	Part No.	Part Name		Q'ty	Note
1	15100-E03-000	.....	Pump, Oil	1	
2	P93700-05016	.....	Bolt, Pan, Crosshead	2	
3	94002-031108	...	Pin	1	
4	93406-STW19	...STW-19	Circlip	2	
5	15110-E01-000	.....	Drive,Gear, Oil-Pump	1	

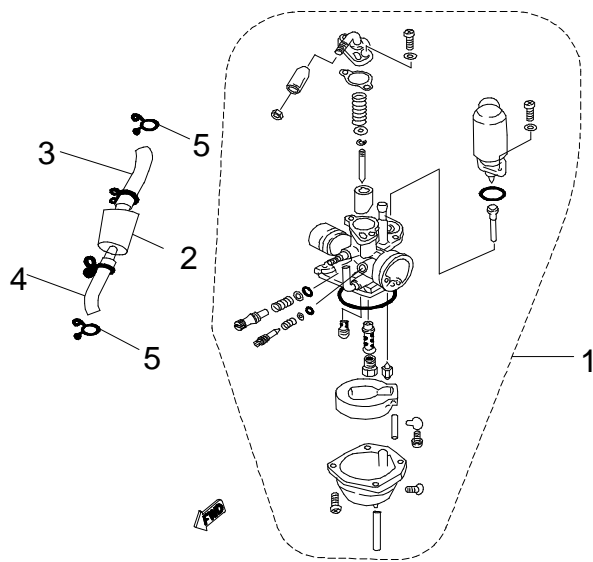
# E-6 Air Cleaner, Reed Valve



Item	Part No.	Part Name	Q'ty	Note
1	17300-E03-000	..... Air Cleaner Ass'y	1	
2	17311-E01-000	.. Seal	1	
3	17320-E01-000	..... Filter Element, Air Cleaner	1	
4	17334-E01-000	....(5x25) Screw, Tapping	3	
5	P91760-06020-05W	.....(M6x20) Hex. Socket Bolt	2	
6	P93100-06013-01W	.... Washer, Plain	2	
7	17333-E01-000	..... Clip	1	
8	14710-E03-000	.... Reed Valve Ass'y	1	
9	14711-E01-000	..... Gasket, Reed Valve	1	
10	16422-E01-000	..... Band, Intake Manifold	1	
11	16410-E01-000	.... Manifold, Intake	1	
12	P91760-06020-05W	.....(M6x20) Hex. Socket Bolt	4	

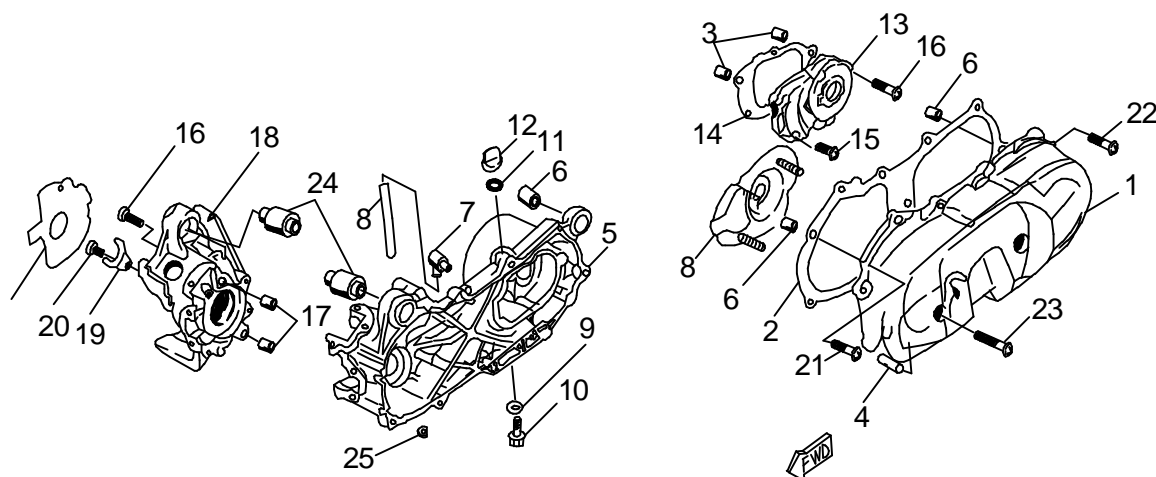
E-7

Carburetor



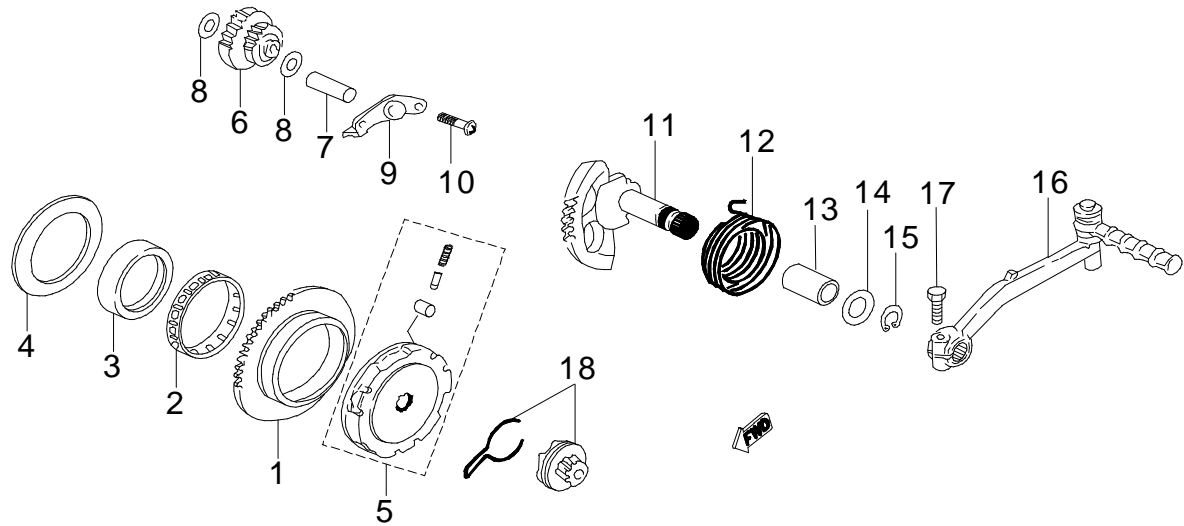
Item	Part No.	Part Name		Q'ty	Note
1	16100-E03-010	.....(50cc)	Carburetor Ass'y	1	
2	16300-E01-000	.....	Filter, Fuel	1	
3	16310-06135	..	Tube, Fuel	1	
4	16310-06070	..	Tube , Fuel	1	
5	97410-E01-000	..	Clip, Tube	4	

## Crankcase



Item	Part No.	Part Name		Q'ty	Note
1	11340-E03-000	.....	Cover, L. Crankcase	1	
2	11395-E01-000	.....	Gasket, L. Crankcase	1	
3	94001-081014	...	Pin, Dowel	4	
4	11344-E01-000	....	Shaft	1	
5	11200-E03-000	....	Crankcase, L.	1	
6	93507-082021	....	Bush	1	
7	11210-E01-000	.....	Breather	1	
8	11211-E01-000	...-..4mmx..6mmx.100mm	Hose,Breather	1	
9	P93101-E01-000	.....	Washer, Copper	1	
10	P91700-08016-12B	.....	Hex.Washer Face Bolt	1	
11	96200-138024	..	O-Ring	1	
12	11212-E01-000	....	Plug, Oil	1	
13	11400-E01-000	....	Cover, Transmission	1	
14	11410-E01-000	.....(..0.5mm)	Gasket, Transmission	1	
15	P91760-06020-05W	.....	Hex. Socket Bolt	3	
16	P91760-06035-05W	.....	Hex. Socket Bolt	10	
17	94001-101216	...	Pin, Dowel	2	
18	11100-E03-000	....	Crankcase, R.	1	
19	11110-E01-000	....	Holder	1	
20	P91760-06010-05W	.....	Hex. Socket Bolt	1	
21	31121-E01-000	.....	Gasket, A.C.G	1	
22	P91760-06025-05W	.....	Hex. Socket Bolt	8	
23	P91760-06065-05W	.....	Hex. Socket Bolt	1	
24	93506-123538	.....	Bush	2	
25	17110-E01-000	..	Grommet	2	

## Starter



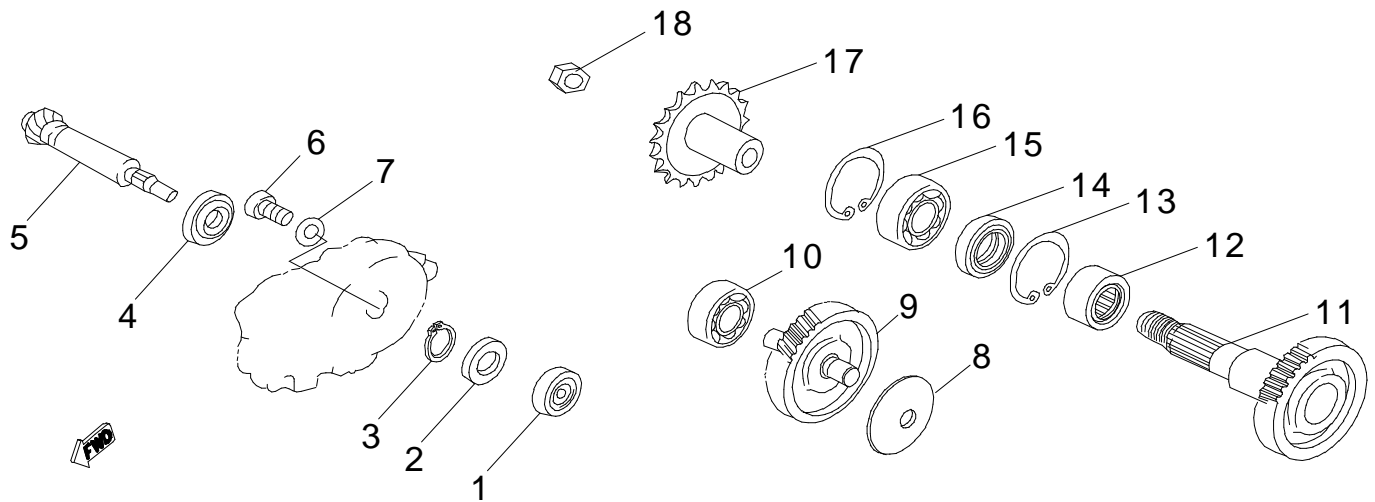
Item	Part No.	Part Name		Q'ty	Note
1	22110-E01-100	.....	Wheel, Starter	1	
2	95200-555912	....	Bearing, Needle	1	
3	11213-E01-000	...	Boss	1	
4	P93100-55076-05B	....	Washer, Plate	1	
5	22100-E03-000	.....(.50)	Wheel, Starter	1	
6	22120-E01-000	.....	Idle Gear Ass'y	1	
7	11344-E01-000	....	Shaft	1	
8	P93100-08216-02C	....	Washer, Plate	2	
9	22121-E01-000	....	Plate, Idle Gear	1	
10	P91760-06010-05W	.....	Hex. Socket Bolt	2	
11	28211-E01-100	....	Kick Shaft Ass'y	1	
12	28261-E01-000	.....	Spring, Torsion	1	
13	28251-E01-000	.....(#F1046)	Bush, Kick Shaft	1	
14	P93100-15228-01C	.....	Washer, Plate	1	
15	93406-STW15	...STW-15	Circlip	1	
16	16105-A01-000	....	Kick Ass'y	1	
17	P91770-06025-10C	....	Hex. Bolt	1	
18	28221-E01-100	.....	Kick Pinion Ass'y	1	



## Clutch

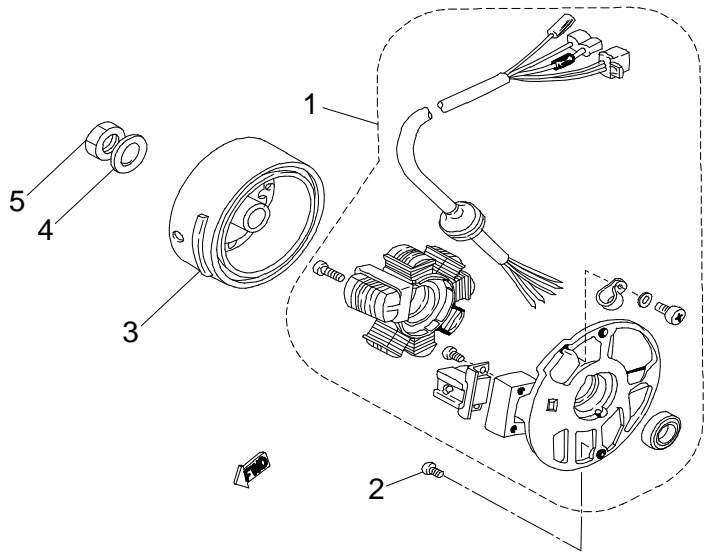
Clutch

## Transmission



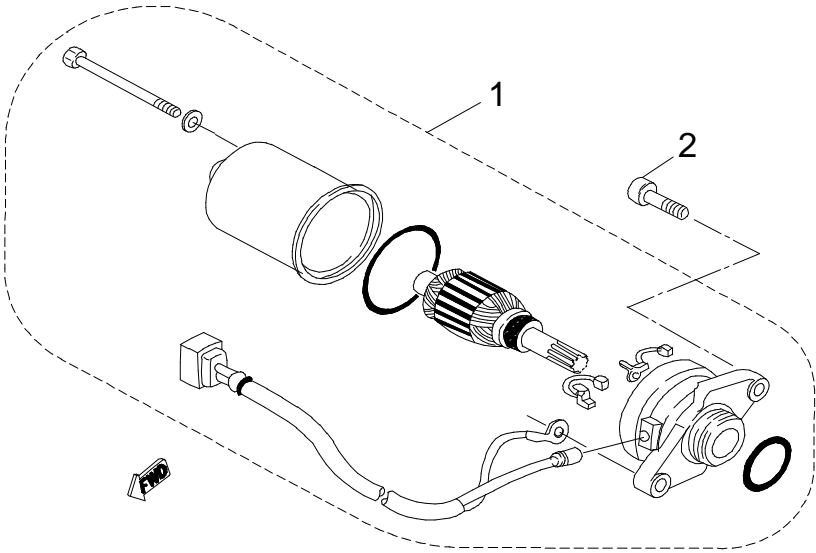
Item	Part No.	Part Name		Q'ty	Note
1	95100-638RD	....	Bearing, Ball	1	
2	96100-172855	..	Seal, Oil	1	
3	93406-STW17	...STW-17	Circlip	1	
4	95100-6003	....	Bearing, Ball	1	
5	23610-E01-000	.....	Drive Gear, Primary	1	
6	P91760-06010-05W	.....	Hex. Socket Bolt	1	
7	P93100-06519-12W	....	Waser, Plate	1	
8	P93104-E01-000	.....	Washer, Conical Spring	1	
9	23620-E01-000	....	Main Axle Comp	1	
10	95100-6201	....	Bearing, Ball	1	
11	23630-E01-000	.....	Gear, Driven	1	
12	95200-HMK2515	....	Bearing, Needle	1	
13	93405-IRTW32	...IRTW-32	Circlip	1	
14	96100-253506	..	Seal, Oil	1	
15	95100-6004LLU	....	Bearing, Ball	1	
16	93405-RTW42	...RTW-42	Circlip	1	
17	23801-E01-000	....	Sprocket, Drive	1	
18	92130-14S-19G	.....(M14)	Nut, Insert Lock	1	

E-12  
Generator



Item	Part No.	Part Name		Q'ty	Note
1	31120-E03-000	.....	Base Ass'y, Generator	1	
2	P91760-06016-05W	.....	Hex. Socket Bolt	2	
3	31100-E03-000	..	Wheel, Fly	1	
4	P93100-12122-16C	....	Washer, Plate	1	
5	P92110-10-17C	....	Hex. Acorn Nut	1	

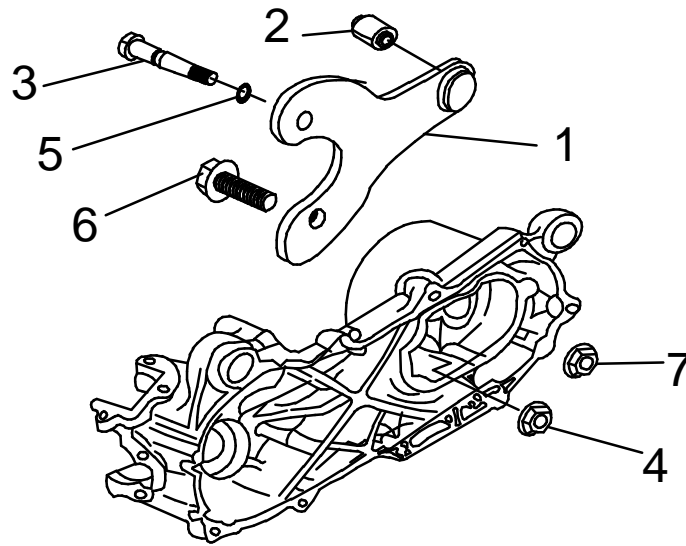
E-13  
Start Motor



Item	Part No.	Part Name		Q'ty	Note
1	31200-E01-000	....	Starting Motor Ass'y	1	
2	P91760-06020-05W	.....	Hex. Socket Bolt	2	

E-14

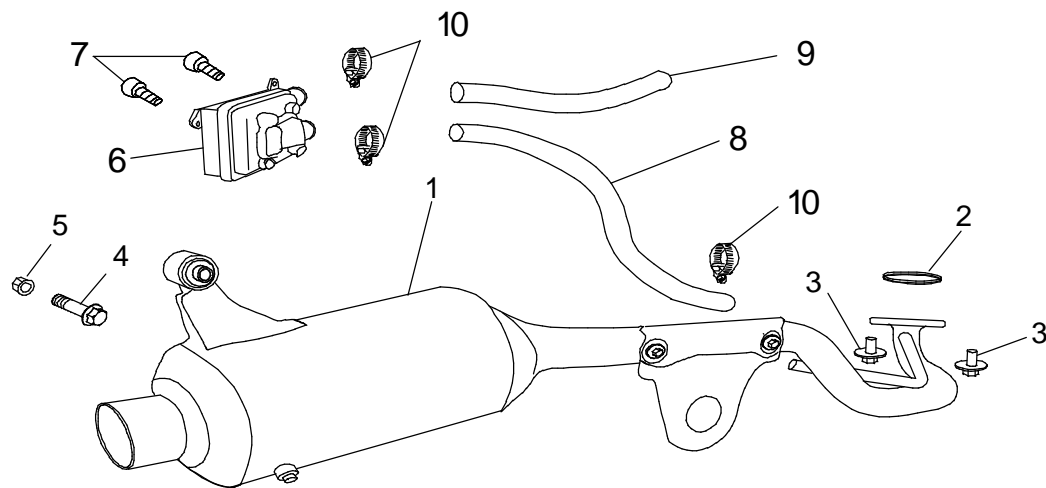
Crankcase Bracket



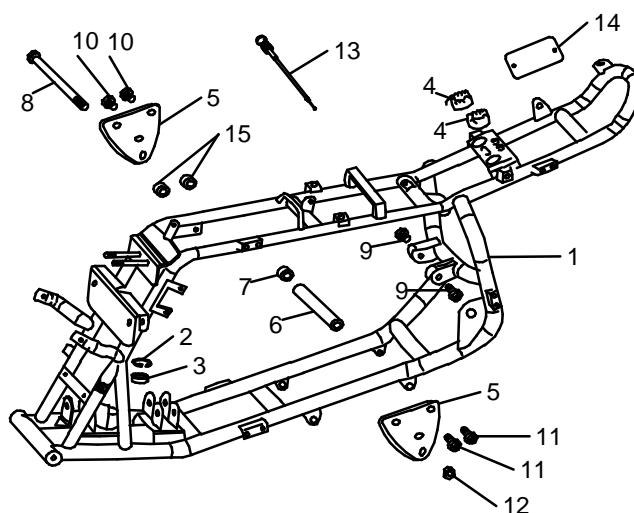
Item	Part No.	Part Name		Q'ty	Note
1	11347-E01-000	....(..)	Bracket, Crankcase	1	
2	93507-082021	....	Bush	1	
3	11348-E01-000	...	Shaft, Fix	1	
4	P92120-08-12C	.....	Hex. Acorn Nut, Flange	1	
5	96200-075015	..(300.)	O-Ring	1	
6	P92100-12040-14C	.....	Hex. Bolt, Flange	1	
7	P92120-12-14C	.....	Hex. Acorn Nut, Flange	1	

F-1

# Exhaust Pipe

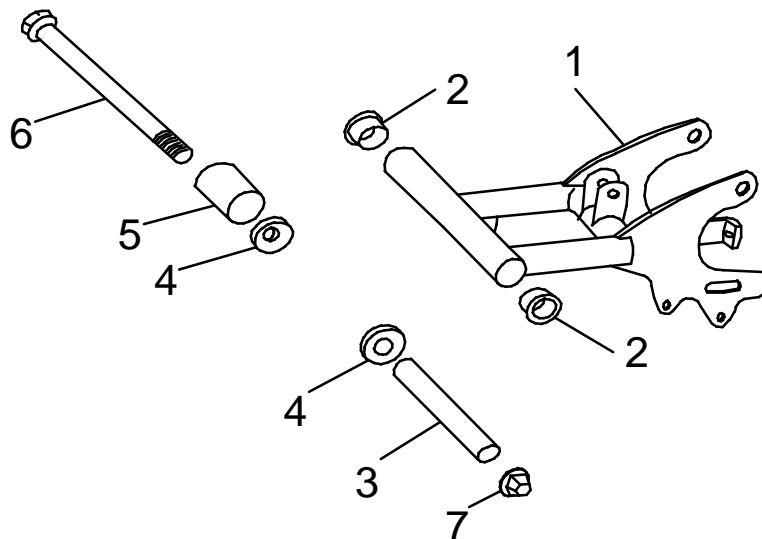


Item	Part No.	Part Name		Q'ty	Note
1	12160-A01-110	.....(50cc)	Exhaust Pipe	1	
2	12161-A01-000	.....	Washer, Muffler	1	
3	91811-A01-000	.....M6x14	Bolt, Crosshead, Flange	2	
4	91710-10040-14G	.....(..)	Bolt , Flange	1	
5	92130-10S-14G	.....(M10)	Nut, Insert Lock	1	
6	12166-A01-000	.....(24.x8)AIR	Reed Valve Ass'y, Air	1	
7	91750-06020-10G	.....(M6x20)	Hex. Bolt,Flange, Washer	2	
8	12168-A01-010	.....	Hose, Air	1	
9	12168-A01-020	.....	Hose, Air	1	
10	97412-A01-010	..	Clip(MinHC-1 7)	3	



Item	Part No.	Part Name		Q'ty	Note
1	71000-A02-020	....(82B2)(..)	Chassis	1	
2	93405-IRTW32	...IRTW-32	Circlip	1	
3	95100-B6002 2RS	....6002 2RS	Bearing	1	
4	93205-A01-000	.....	Coushion, Seat	2	
5	71205-A01-000	.....(4.)	Engine Holder Seat	2	
6	93305-A01-000	...(... )12.5x17x103	Collar (andoised)	1	
7	93310-A01-000	...(... )	Collar(andoised)	1	
8	91700-12220-14G	.....(M12x220)	Blot Flange	1	
9	91710-08035-12G	.....(..)	Hex Washer Face Bolt	2	
10	91700-08020-12G	.....	Bolt, Flange	2	
11	91700-08012-12G	.....(M8x12)	Bolt, Flange	2	
12	92130-12S-17G	.....(M12)	Nut, Insert Lock	1	
13	31220-A01-000	...(..)	Cable, Manual Choke	1	
14	71237-E03-000	....(ST50L)	ID plate	1	
15	93300-08020-07	...	Spacer	2	

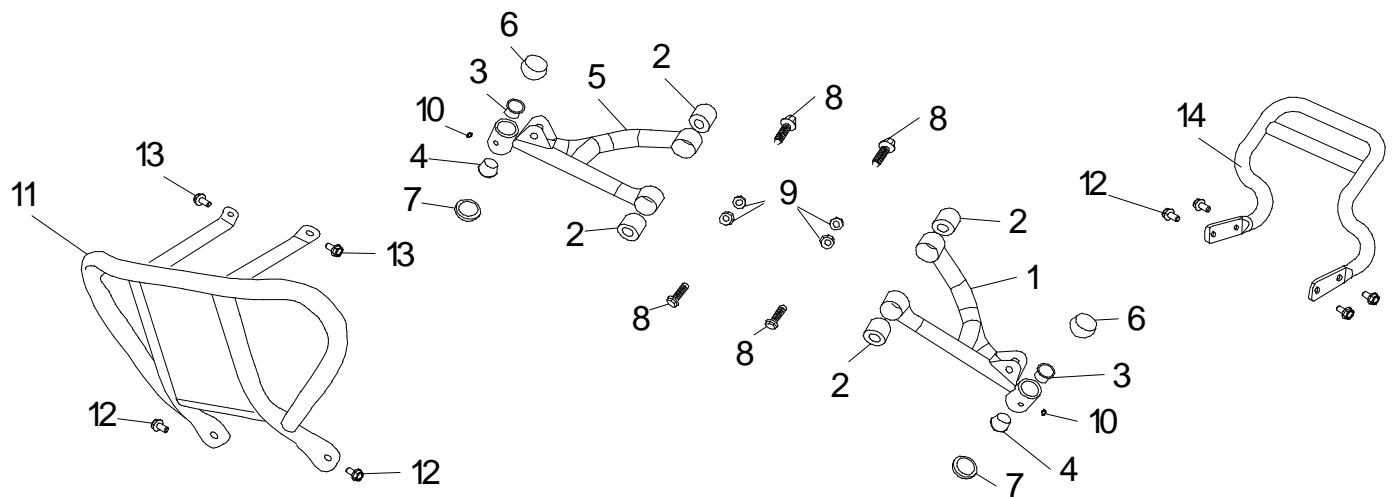
## Awing Arm , Footrest



Item	Part No.	Part Name		Q'ty	Note
1	82105-A01-00A	..(81)	Fork, Rear	1	
2	95305-A01-000	.....	Bushing Contain Oil	2	
3	93315-A01-000	....(14.1x20x253)	Spacer Tube, Rear-fork	1	
4	93105-A01-100	...	Seal cover,swing Arm	2	
5	93210-A01-000	...(PK-6152)	Rubber Sleeve	1	
6	91700-14290-19G	.....(M14x290)	Bolt, Flange	1	
7	92130-14S-19G	.....(M14)	Nut, Insert Lock	1	

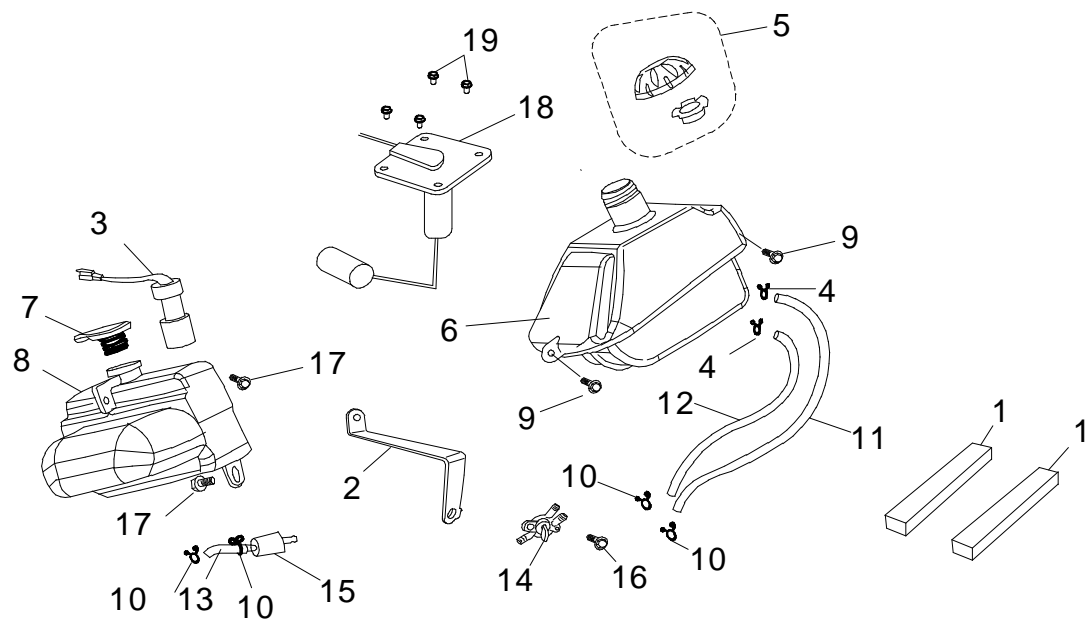


## Pumper A-Arm



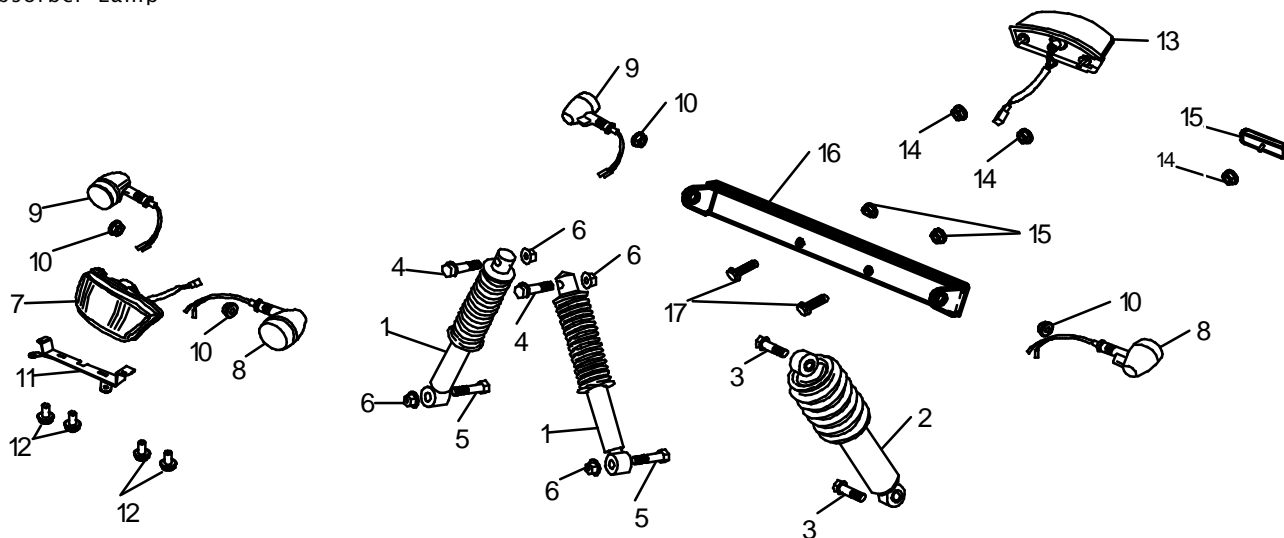
Item	Part No.	Part Name		Q'ty	Note
1	81105-A02-000	.A.(82.)(..)	A. Arm, Left	1	
2	93505-A01-100	...	Bush	4	
3	95310-A01-000	...	Bush, Contion Oil, Top	2	
4	95315-A01-000	...	Bush, Contion oil, Bottom	2	
5	81110-A02-000	.A.(82.)(..)	A Arm, Right	1	
6	93605-A01-000	...(200.)(PK-6143)	Waterproof Rubber	2	
7	93610-A01-000	...(200.)(PK-6148)	Dustproof Rubber	2	
8	91700-10048-14G	.....(M10x48)	Bolt, Flange	4	
9	92130-10S-14G	.....(M10)	Nut, Insert Lock	4	
10	91805-A01-000	...(M6)	Grease Valve	2	
11	71211-A01-020	...(...)/ ...	Front Bumper	1	
12	91700-08012-12G	.....(M8x12)	Bolt, Flange	6	
13	91750-06016-10G	.....(M6x16)	Bolt ,Flange	2	
14	71235-A01-010	...(82.)	Rear Hand Grip	1	

## Fuel Tank, Oil Tank



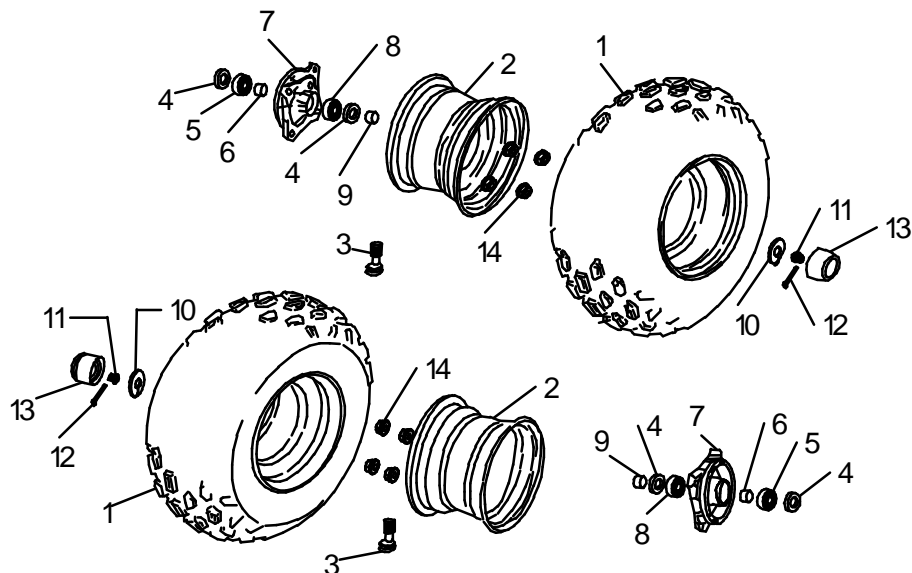
Item	Part No.	Part Name		Q'ty	Note
1	12110-A02-000	....(82.)	Sponage	2	
2	12220-A01-001	.....	Bracket, Support	1	
3	12210-A01-000	....	Gauge, Oil Level	1	
4	97411-A01-000	..(1/2")	Clip	2	
5	12150-A01-010	.....(.)	Cap Assembly, Fuel tank	1	
6	12100-A01-010	...B.(4..)	Tank, Fuel	1	
7	12205-A01-001	....(..)	Cap, Oil Tank	1	
8	12200-A01-001	...	Tank, Oil	1	
9	91750-06016-10G	.....(M6x16)	Bolt ,Flange	2	
10	97410-A01-000	..(8x0.8)	Clip, Tube	4	
11	12310-A01-001	...A	Tube A, Fuel	1	
12	12311-A01-001	...B	Tube B, Fuel	1	
13	12317-A01-011	.....(190mm)	Tube, Oil	1	
14	12105-A01-000	...	Valve, Fuel	1	
15	12215-A01-000	.....(50.x2)	Oil Filter	1	
16	91700-06012-10G	.....(M6x12)	Hex. Bolt, Flange	1	
17	91821-A01-000	.....(.)	Bolt, Hex Ladder(Short)	2	
18	12115-A01-000	....	Gauge, Fuel Tank	1	
19	91700-05010-08K	.....(..)	Bolt, Hex. Washer Plate	4	

## Shock Absorber Lamp



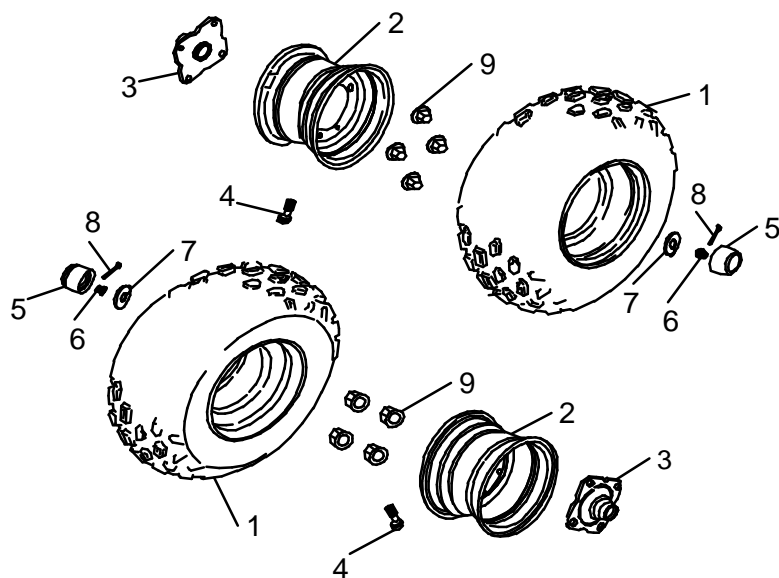
Item	Part No.	Part Name		Q'ty	Note
1	81200-A01-00A	....(81)	Shock Absorber, Front	2	
2	82200-A01-010	....(81+25%)	Shock Absorber, Reae	1	
3	91710-10038-14G	.....(..)	Hex. Bolt, Flange	2	
4	91700-10040-14G	.....(M10x40)	Hex. Bolt, Flange	2	
5	91770-10038-14G	....(M10x38)	Hex. Blot	2	
6	92130-10S-14G	.....(M10)	Nut, Insert Lock	4	
7	62205-A01-000	....	Head Lamp Comp	1	
8	62230-A01-000	....	Singal Light, L. Rear	2	
9	62225-A01-000	....	Signal Light, R. Rear	2	
10	92120-10-14G	.....(M10)	Nut,Flange	4	
11	62206-A01-000	....	Head Lamp Bracket	1	
12	91825-A01-010	.....4x12	Philips Screw, Tapping	4	
13	62210-A01-000	....	Tail Light Comp	1	
14	92130-06S-10G	.....(M6)	Nut, Self-Locking	5	
15	62240-A01-000	....	Reflector, Rear	1	
16	83117-A01-000	.....	Clip, Signal Light	1	
17	91700-06016-10G	.....(M6x16)	Hex Washer Face Bolt	2	

## Front Tire



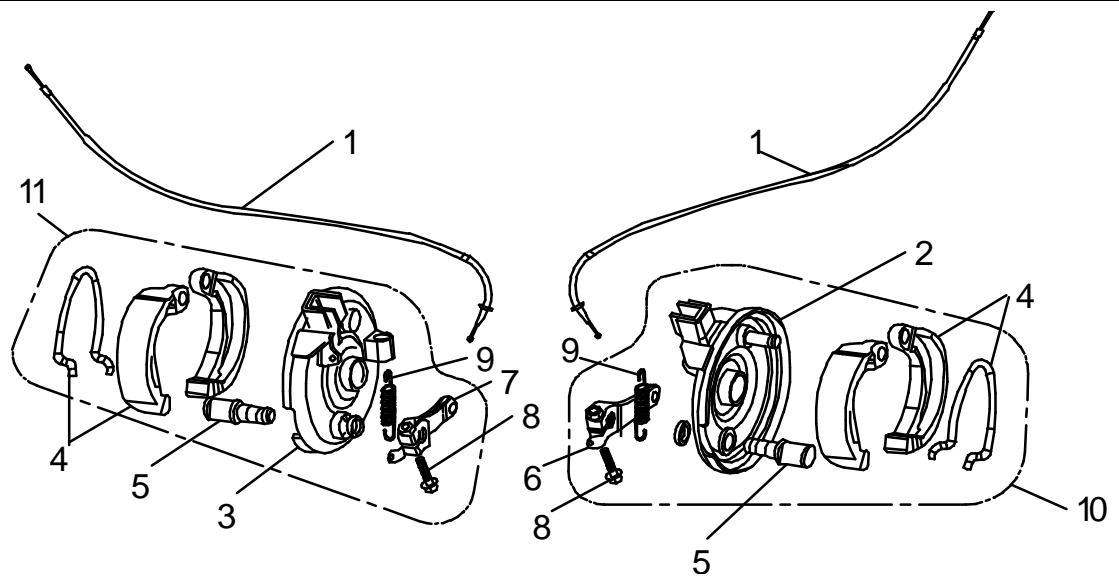
Item	Part No.	Part Name		Q'ty	Note
1	24105-A02-000	..(K546F)19x7-8	Tire(K546F)19x7-8	2	
2	24205-A01-100	..(8x5.5)	Rim	2	
3	24106-A01-000	..TR-412	Valve, Tire	2	
4	96100-223507A	..	Seal, Oil	4	
5	95100-T6003Z	....	Bearing, Ball	2	
6	93325-A01-000	...(15x22x15)	Spacer, Inner	2	
7	31105-A01-000	....(...)	Drum Brake, Front	2	
8	95100-T6002Z	....	Bearing, Ball	2	
9	93320-A01-000	...(15x22x10)	Spacer, Outer	2	
10	93100-12540-45G	....(12.5x40x4.0)	Washer, Plate	2	
11	92140-12-17G	.....(M12)	Nut, Insert Lock	2	
12	94000-03032	...(3x32)	Cotter pin	2	
13	93615-A01-000	..(200.)(PK-6142)	Cap, Rubber	2	
14	92130-10S-14G	.....(M10)	Nut, Insert Lock	8	

F-8  
Rear Tire



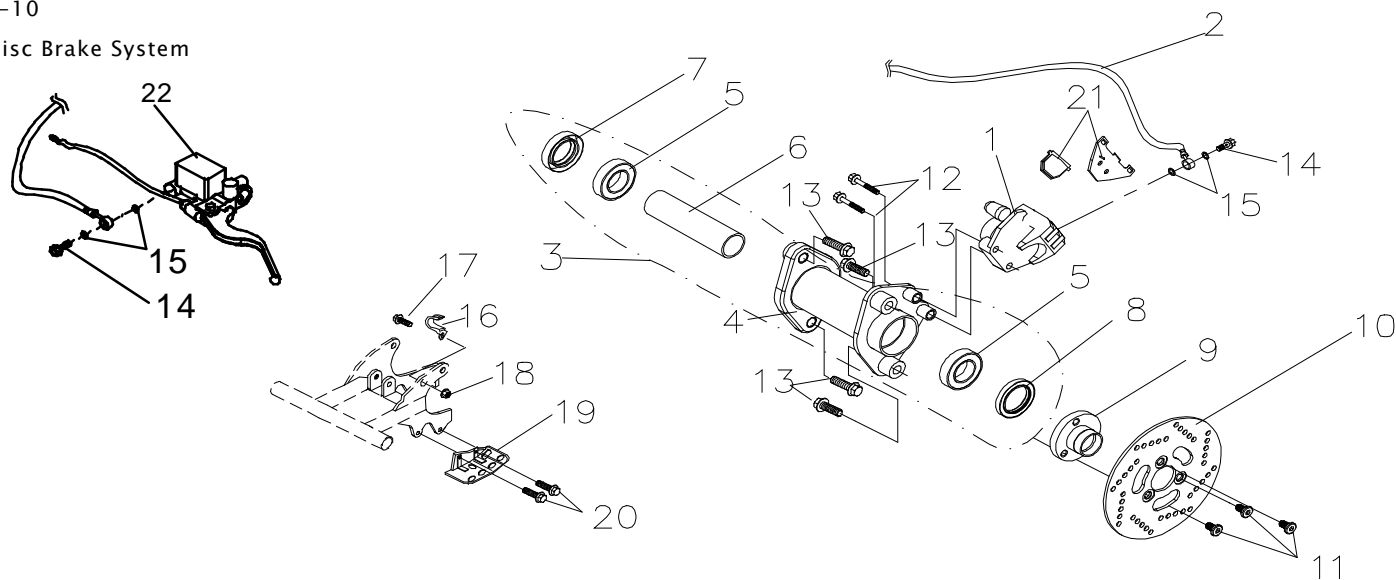
Item	Part No.	Part Name		Q'ty	Note
1	24105-A02-010	...(K546F)18x9.5-8	Tire(K546F)18x9.5-8	2	
2	24205-A01-100	...(8x7)	Rim	2	
3	23105-A01-001	.....(...)	Fixed bracket, Rim, Rear	2	
4	24106-A01-000	..TR-412	Valve, Tire	2	
5	93615-A01-000	...(PK-6142)	Cap, Rubber	2	
6	92140-14-19G	.....(M14)	Nut, Insert Lock	2	
7	93100-14540-45G	....(14.5x40x4.5)	Washer, Plate	2	
8	94000-03032	...(3x32)	Cotter pin	2	
9	92130-10S-14G	.....(M10)	Nut, Insert Lock	8	

## Drum Brake, Front



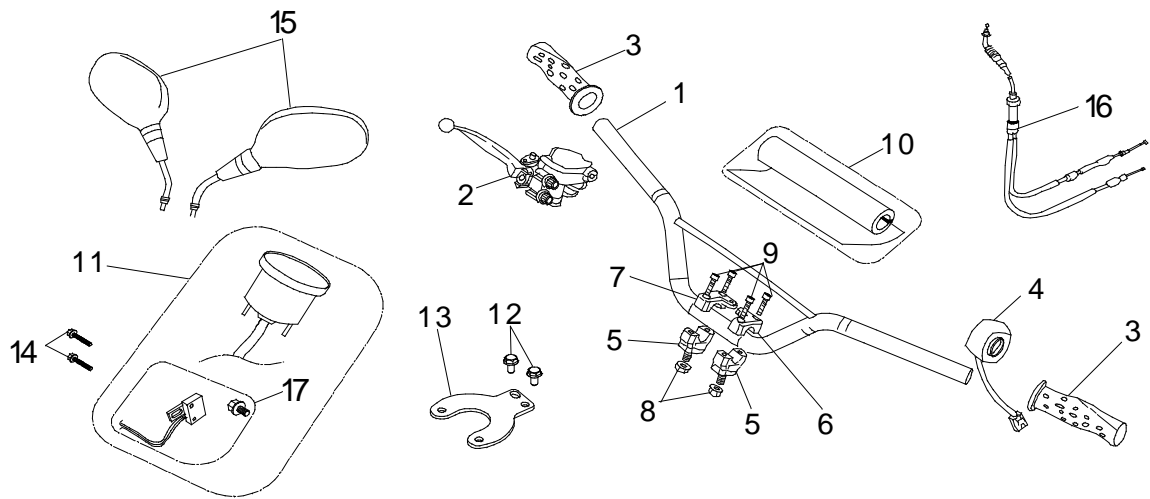
Item	Part No.	Part Name		Q'ty	Note
1	31205-A02-001	.....(1.1.)	Cable , Front Brake	2	
2	31306-A01-00A	.....	Panel Comp , Front L,Brak	1	
3	31311-A01-00A	.....	Panel Comp , Front R,Brak	1	
4	31315-A01-000	.....(...)	Shoe, Front Drum Brake	2	
5	31320-A01-000	.....	Cam Shaft, Front Brake	2	
6	31325-A01-010	.....(2.)	Arm, Front L. Brake	1	
7	31330-A01-010	.....(2.)	Arm, Front R. Brake	1	
8	91700-05024-08C	.....(M5x24)	Bolt, Hex. Washer Plate	2	
9	97205-A01-000	.....	Return Spring, Front Brake	2	
10	31305-A01-011	.....(2.)	Panel Comp Ass'y ,Front L.Brak	1	
11	31310-A01-011	.....(2.)	Panel Comp Ass'y ,Front R.Brak	1	

## Disc Brake System



Item	Part No.	Part Name	Q'ty	Note
1	31115-A01-000	..... Rear Disc Caliper	1	
2	31225-A02-000	.....(..) Hose, Rear Disk Brake	1	
3	31300-A01-010	..... Rear Axle Bearing Carrier	1	
4	31335-A01-010	..... Rear Axle Bearing Carrier(Disc	1	
5	95100-6006ZZ	..(6006zz) Bearing	2	
6	93330-A01-00A	.....(..134) Spacer	1	
7	96100-355511	..(35x55x11) Oil Seal	1	
8	96100-355507	..(35x55x07) Oil Seal	1	
9	31355-A01-010	..... Holder Disk	1	
10	31120-A01-000	..... Rear Brake Disc	1	
11	91760-10014-08G	.....(..)M10x14 Hex Socket Bolt	3	
12	91710-08038-12G	.....(..) Hex Washer Face Bolt	2	
13	91710-12028-17G	.....(..) Hex Washer Face Bolt	4	
14	91830-A01-000	..... Nut, Brake Hose	2	
15	93101-A01-000	..... Washer, Copper	4	
16	83115-A01-000	..... Clip, Brake Hose	1	
17	91700-06016-10G	.....(M6x16) Hex Washer Face Bolt	1	
18	92130-06S-10G	.....(M6) Nut, Self-Locking	1	
19	71220-A01-000	..... Rear Brake Guard	1	
20	91700-08012-12G	.....(M8x12) Bolt, Flange	2	
21	31116-A01-000	..... Brake Pad , Disk Brake	1	
22	31405-A01-000	.....(....) Lever Ass'y, Left	1	

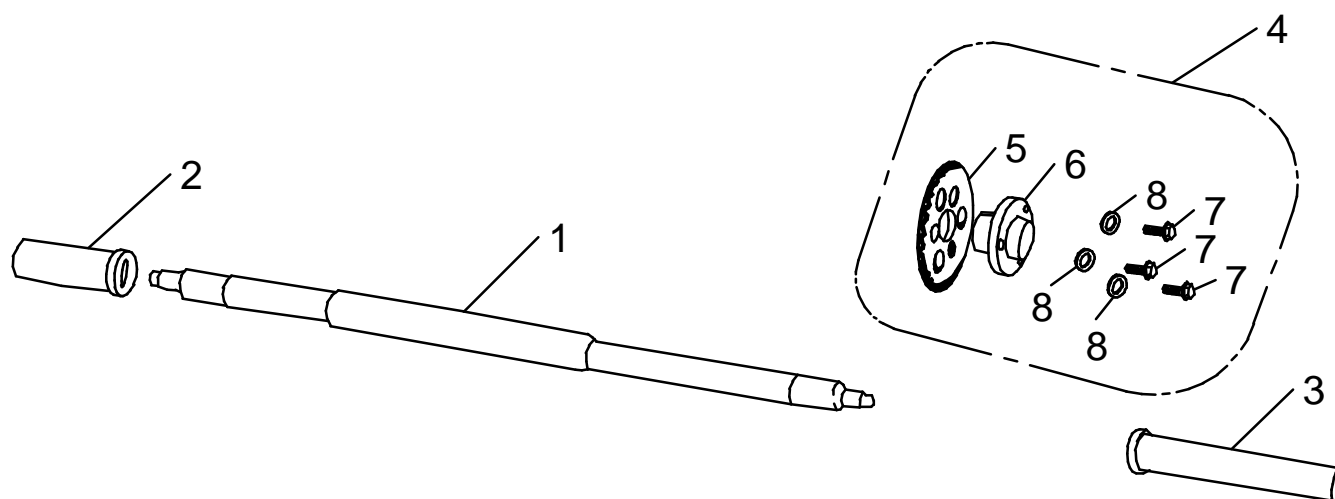
## Handle bar,Lever



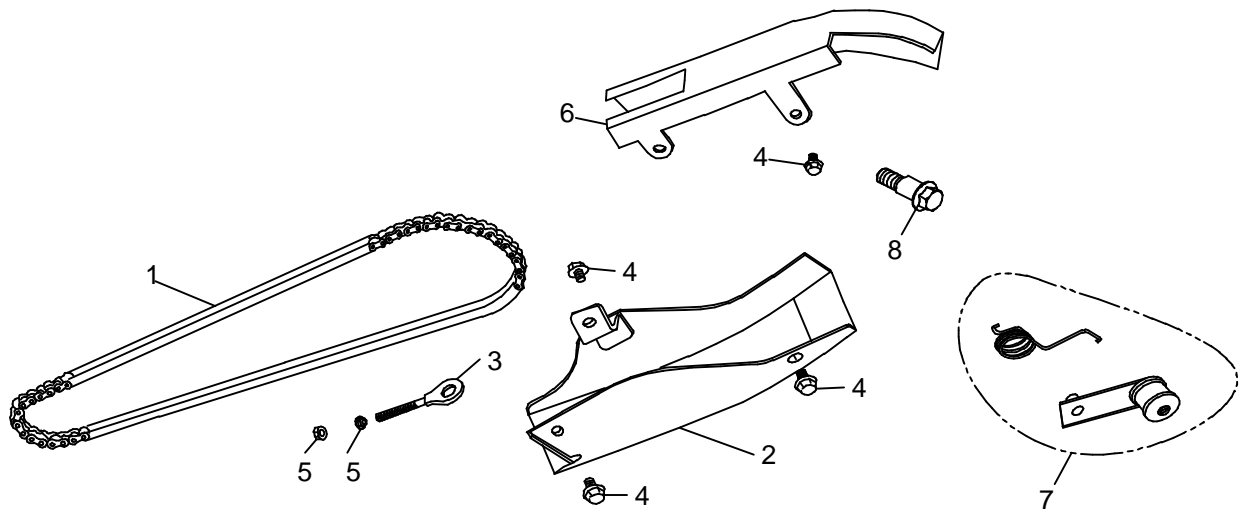
Item	Part No.	Part Name		Q'ty	Note
1	51101-A01-010	..(..)(..)	Handleber	1	
2	31450-A01-000	.....	Lever Ass'y,Right	1	
3	51105-A01-000	...(.)	Grip, Handle(L)	2	
4	61101-A01-0A0	.....	Handle Switch Ass'y, L.	1	
5	52105-A01-000	.....	Bottom Clamp, Handlebar	2	
6	52110-A01-000	.....(.)	Top Clamp, L. Handlebar	1	
7	52115-A01-000	.....(.)	Top Clamp, R. Handlebar	1	
8	92130-10S-14G	.....(M10)	Nut, Insert Lock	2	
9	91760-06025-05G	.....(M6x25)	Screw, Hex. Socket	4	
10	51110-A01-010	.....(500.)	Pad,Handlebar	1	
11	63300-A01-010	.....	Speedometer	1	
12	91760-06012-05G	.....(M6x12)	Hex. Screw, Socket	2	
13	83120-A01-010	.....	Bracket Speedometer	1	
14	91740-04008G	.....(M4X8)	Bolt,Pan Phillips	2	
15	51115-A01-001	....-..(2.)	Rear Mirror(pair)	1	
16	31215-A02-000	...-..	Cable, Throttle	1	
17	63300-A01-011	.....	Sensor, Speedometer	1	



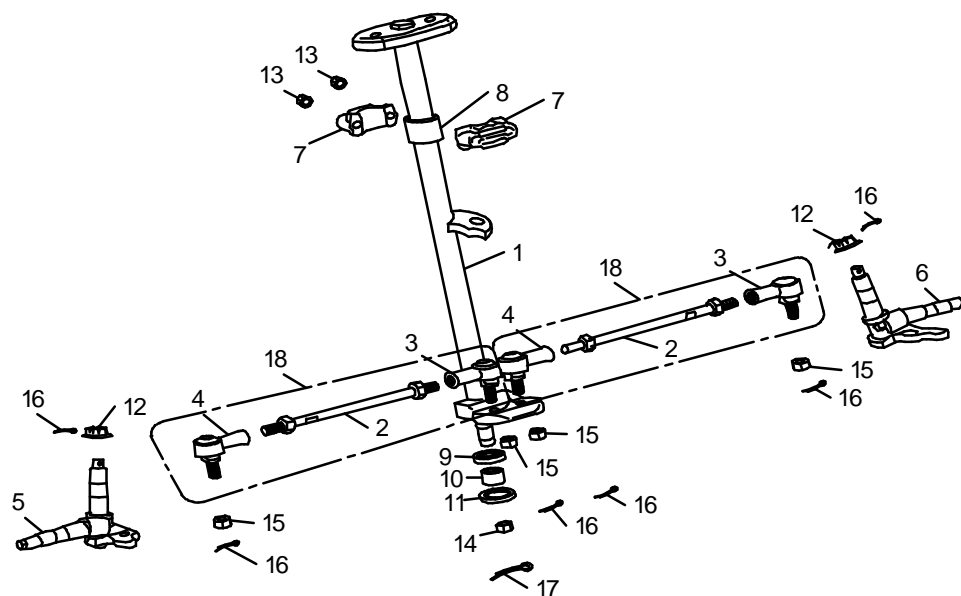
## Rear Axle, Sprocket



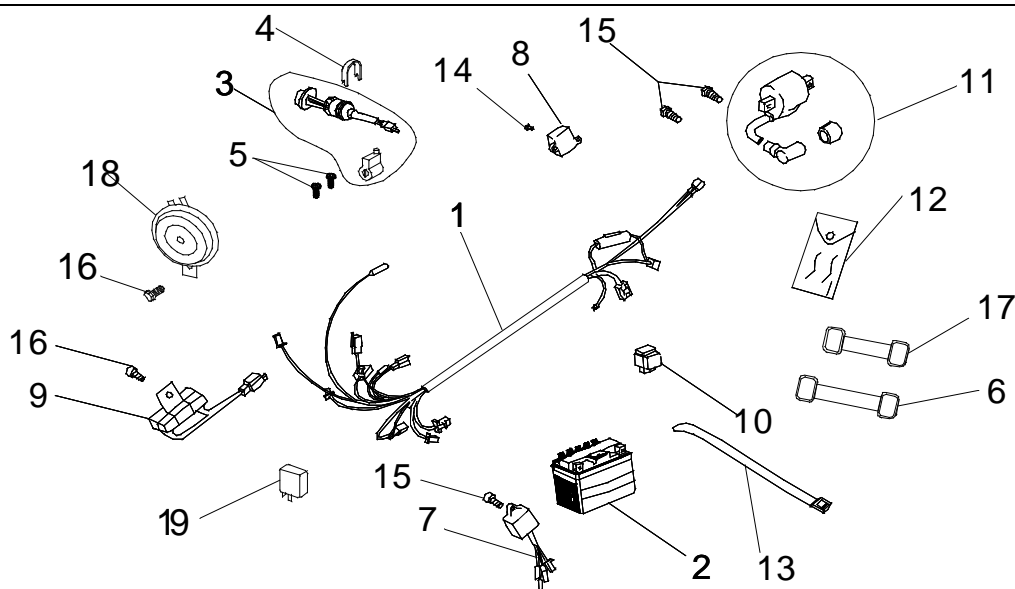
Item	Part No.	Part Name		Q'ty	Note
1	23205-A01-010	...(811mm)	Rear Axle	1	
2	93349-A02-001	.....	Spacer Tube ,Left	1	
3	93335-A02-001	.....	Spacer Tube, Right	1	
4	23300-A01-00B	....(428-28T)	Sprocket Ass'y(rear,428-28T)	1	
5	23305-A01-00B	...(428-28)	Sprocket	1	
6	23310-A01-000	.....	Sprocket Holder, Driven	1	
7	91810-A01-000	.....(..)	Bolt, Hex. Washer Plate	3	
8	93103-A01-000	....	Spring Washer	3	



Item	Part No.	Part Name		Q'ty	Note
1	23315-A01-110	..428H-82.	Chain	1	
2	71225-A01-000	.....	Guard, Bottom, Chain	1	
3	91815-A01-000	.....	Adjuster, Chain	2	
4	91700-08012-12G	.....(M8x12)	Bolt, Flange	4	
5	92120-06-10G	.....(M6)	Nut, Flange	4	
6	71230-A01-000	.....	Guard, Top, Chain	1	
7	23320-A01-000	.....(...)	Bracket, Chain	1	
8	91823-A01-000	.....	Hex Washer Ladder Bolt	1	

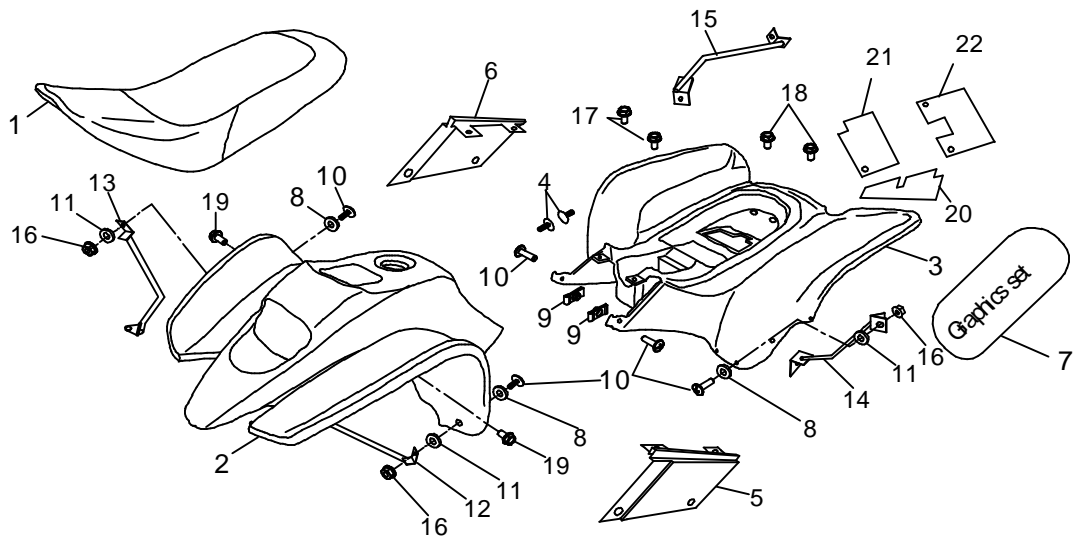


Item	Part No.	Part Name		Q'ty	Note
1	52205-A02-000	.....(82B)	Steering Shaft Assembly	1	
2	52305-A01-000	.....	Bolt, Stud	2	
3	52310-A01-000	...(..)	Ball Joint, Left Thread	1	
4	52315-A01-000	...(..)	Ball Joint, Right Thread	1	
5	52320-A01-000	.....(L)	Knuckle, L.	1	
6	52325-A01-000	.....(R)	Knuckle, R.	1	
7	52120-A01-000	...	Shaft Holder, Steering	2	
8	93510-A01-000	PU..(Logo)	Bush, PU	1	
9	96100-183207A	..	Seal , Oil	1	
10	93325-A01-000	...(15x22x15)	Spacer, Inner	1	
11	96100-223507A	..	Seal, Oil	1	
12	92141-10-14G	.....(M10)	Cross Thread Nut	2	
13	92130-08S-14G	.....(M8)	Nut, Insert Lock	2	
14	92130-14S-19G	.....(M14)	Nut, Insert Lock	1	
15	92130-10S-14G	.....(M10)	Nut, Insert Lock	4	
16	94000-02019	...(2x19)	Cotter pin	6	
17	94000-03032	...(3x32)	Cotter pin	1	
18	52300-A02-000	....(82)	Link Ass'y	2	



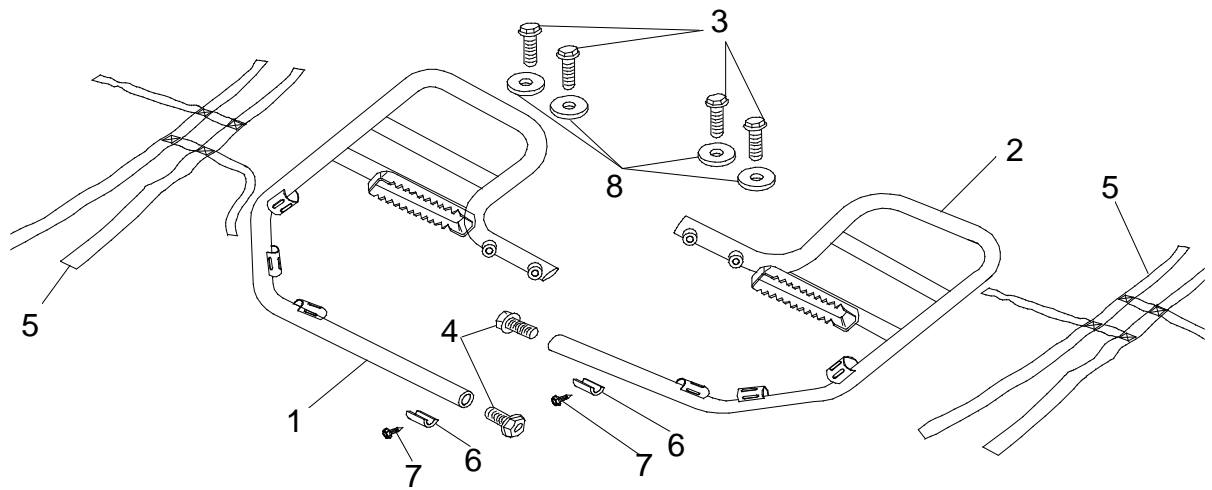
Item	Part No.	Part Name		Q'ty	Note
1	63100-A01-042	...(50/100.cc)	Main Wire Ass'y	1	
2	63205-A01-00A	..CTX5L-BS	Battery	1	
3	61106-A01-001	....(....)	Main Switch(with Handle Lock)	1	
4	61107-A01-000	.....	Clip, Main Switch	1	
5	91732-06015G	.....	Bolt	2	
6	83110-A01-000	...(.)	Rubber Band,Tool Bag	1	
7	61115-A01-000	C.D.I ....	C.D.I Unit	1	
8	61120-A01-000	.....	Rectifier & Regulator	1	
9	61125-A01-100	...(20W,8.5)	Resistor	1	
10	61130-A01-100	....(..)	Starter Relay	1	
11	61109-A01-001	.....(ST100..)	Ignition Coil	1	
12	72105-A01-000	...	Tool Bag	1	
13	93705-A01-000	..(..)(100./.)	Strap	12	
14	91740-05012G	.....(M5x12)	Bolt, Pan Phillips	2	
15	91700-06016-10G	.....(M6x16)	Hex Washer Face Bolt	3	
16	91700-06012-10G	.....(M6x12)	Hex. Bolt, Flange	2	
17	83105-A01-010	...(...)(..)	Rubber Band, Battery	1	
18	61145-A01-000	..	Horn	1	
19	61150-A01-000	.....	Blink Relay	1	
20	72117-A01-010	....(ACCESS)	Owner manual	1	

## Seat, Fender



Item	Part No.	Part Name	Q'ty	Note
1	71305-A02-000	....(.)	1	
2	72205-A01-000	..(.)	1	Blue
	72205-A01-00A	..(.)		Red
	72205-A01-00B	..(.)		Yellow
	72205-A01-00D	..(.)		Black
3	72210-A01-000	..(.)	1	Blue
	72210-A01-00A	..(.)		Red
	72210-A01-00B	..(.)		Yellow
	72210-A01-00D	..(.)		Black
4	93611-A01-010	....	12	
5	72230-A02-000	...(.)	1	Blue
	72230-A02-00A	...(.)		Red
	72230-A02-00B	...(.)		Yellow
	72230-A02-00D	...(.)		Black
6	72225-A02-000	...(.)	1	Blue
	72225-A02-00A	...(.)		Red
	72225-A02-00B	...(.)		Yellow
	72225-A02-00D	...(.)		Black
7	72115-A01-010	....(BD)	1	
8	93104-A01-010	....(14x5.5x0.8)	8	
9	92210-A01-000	U...(M6..)	4	
10	91731-06016	.....(..)	8	
11	93215-A01-000	...	4	
12	71100-A02-000	.....(.)	1	
13	71101-A02-000	.....(.)	1	
14	71102-A02-000	.....(.)	1	
15	71103-A02-000	.....(.)	1	
16	92130-06S-10G	.....(M6)	4	
17	91820-A01-000	.....(.)	2	
18	91821-A01-000	.....(.)	4	
19	91750-06016-10G	.....(M6x16)	2	
20	72120-A01-000	...(.)	1	
21	72125-A01-000	...(.)	1	
22	72130-A01-000	...(.)	1	

F-17  
Nerfbar



Item	Part No.	Part Name		Q'ty	Note
1	72305-A02-010	...(82)(...)	Nerfbar , Right (chromed)	1	
2	72310-A02-010	...(82)(...)	Nerfbar , Left (chromed)	1	
3	91700-08012-12G	.....(M8x12)	Bolt, Flange	4	
4	91700-08020-12G	.....	Bolt, Flange	2	
5	72311-A02-000	...	Nylon net,Nerfbar	2	
6	93504-A01-000	.....(NR..)	Rubber Mate, Nerfbar	2	
7	91825-A01-010	.....4x12	Philips Screw, Tapping	2	
8	P93100-10032-03G	....	Washer, Plain	4	